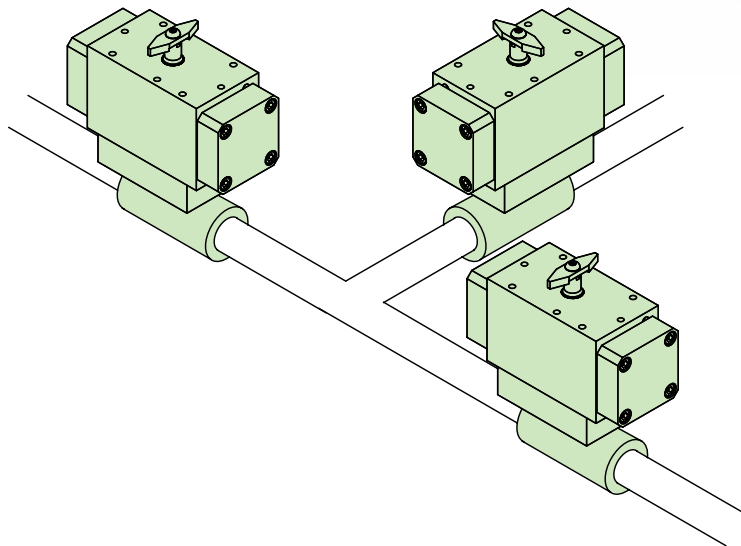




phd *Unlimited*[®]
UNIQUE
SOLUTIONS

Unique

BALL VALVE ROTARY
Model# ML302704



UNIQUE

Major Benefits

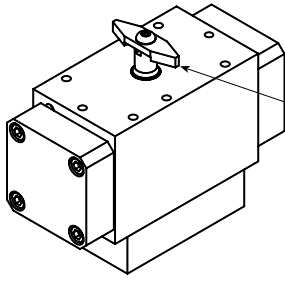
- Pneumatic ball valve actuator
- Direct replacement
- Higher torque
- Single and double acting
- Other designs available
- Corrosion resistant option available

Industry Uses

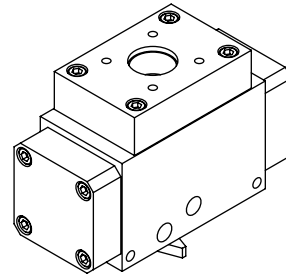
- Automotive
- Metal forming



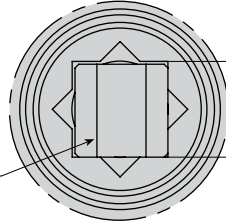
DIMENSIONS: BALL VALVE ROTARY MODEL# ML302704



POINTER IS MOVABLE FOR 90° INCREMENT



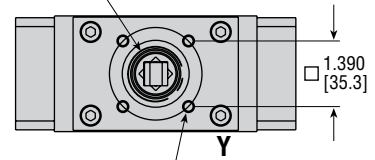
DETAIL Y 2:1



SQUARE PIECE IS MOVABLE FOR 45° INCREMENT

4X .507 [12.9]

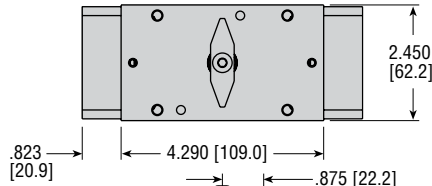
Ø 1.062 [27.0] x DP .125 [3.2] ± .020 [0.5]



ALUMINUM PLATE

Y

4X 1/4-20 UNC-2B THD x DP .730 [18.5] MIN

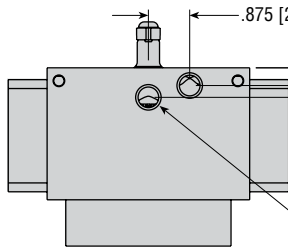


.823 [20.9]

4.290 [109.0]

2.450 [62.2]

.875 [22.2]



.375 [9.5]

2X 1/4-18 NPT PORT

.973 [24.7]

.938 [23.8] DP TO BOTTOM OF SLOT

4.748 [120.6]

.625 [15.9]

NOTES:

- 1) ALL DIMENSIONS ARE FOR REFERENCE ONLY
- 2) 90° ROTATION W/ 2.000" BORE UNIT
- 3) UNIT SHOWN AT FULL CLOCKWISE POSITION
- 4) SPRING CLOCKWISE FOR 76 in-lb OF TORQUE (201 lb TOTAL SPRING PRELOAD)
- 5) FLAG AND VALVE POSITION INSERT MOVABLE FOR 45° INCREMENTS
- 6) HARDWARE KIT INCLUDED FOR MOUNT VALVE (1/4-20 STUDS- NO WASHERS OR NUTS)





phd *Unlimited*[®]

UNIQUE SOLUTIONS

Unique

REPLACEMENT ROTARY Model# ML216496

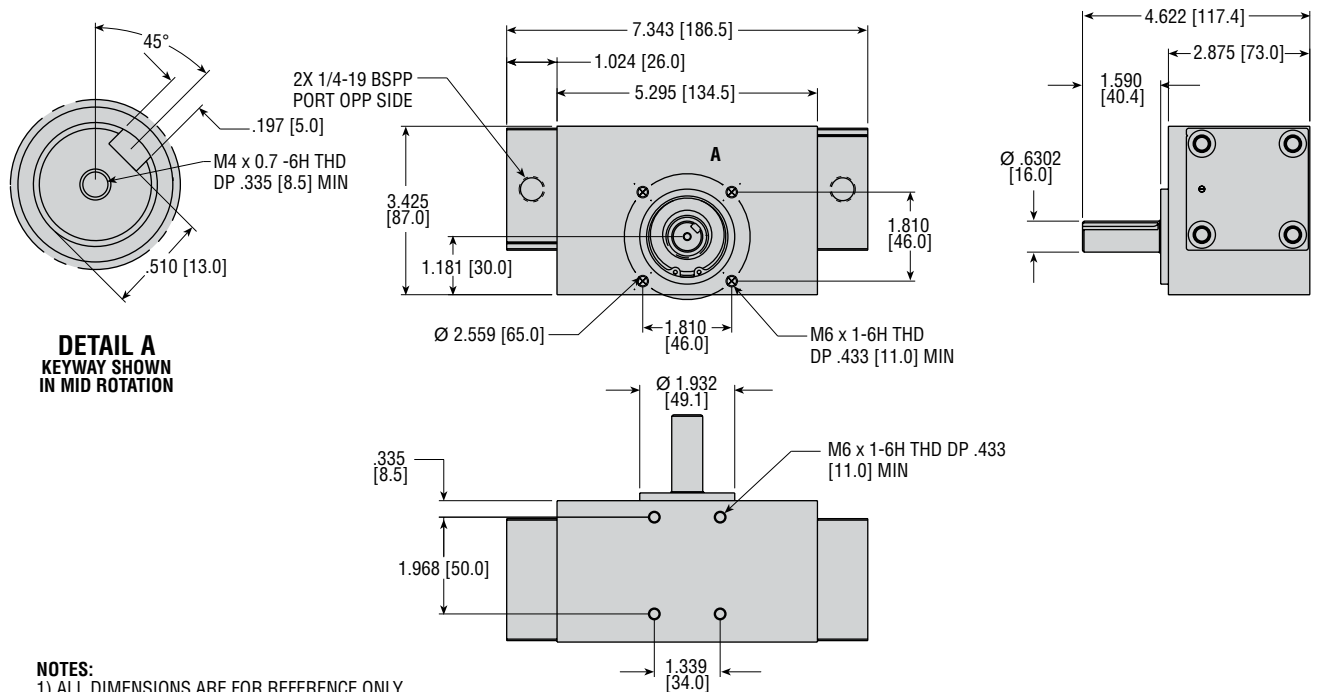


Major Benefits

- Direct mounting replacement
- Pinion shaft modified as direct replacement
- Boss provides easy alignment

Industry Uses

- Carpet industry
- Metal forming
- Food industry
- Wood processing



NOTES:
1) ALL DIMENSIONS ARE FOR REFERENCE ONLY
2) DIMENSIONS NOT NOTED ARE STANDARD PER DESCRIPTION

All dimensions are reference only unless specifically toleranced.

www.phdinc.com/unlimited • (800) 624-8511

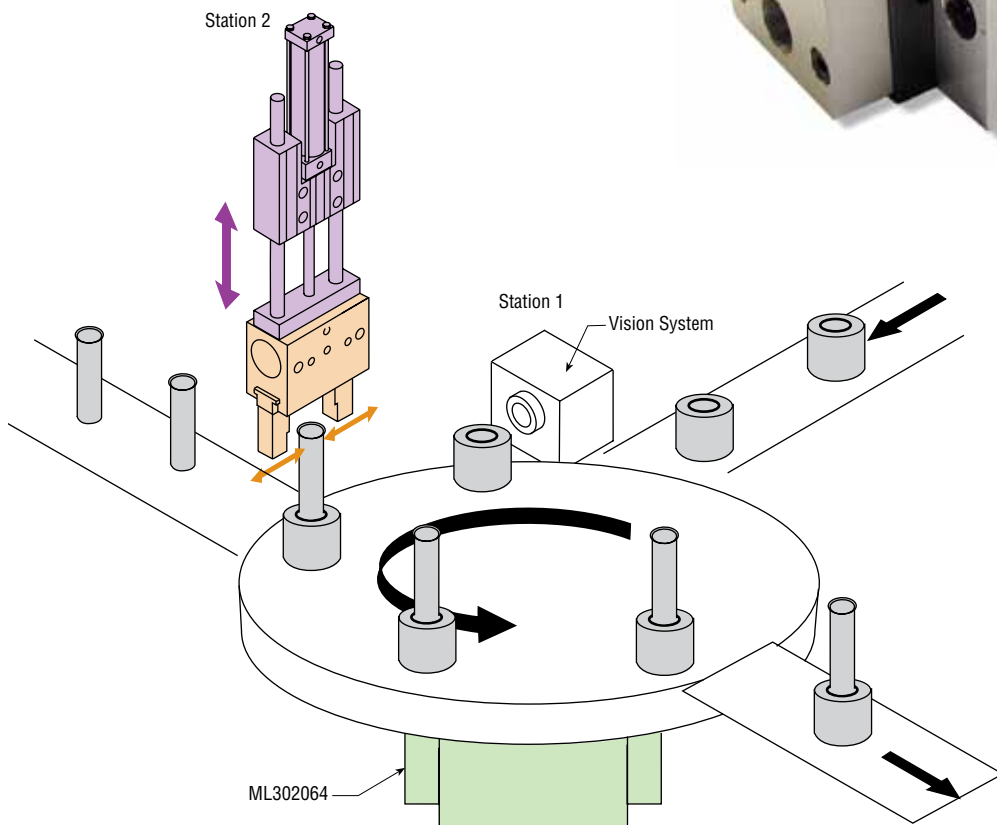




**SERIES RAS
WITH CLUTCH
Model# ML302064**



UNIQUE



Major Benefits

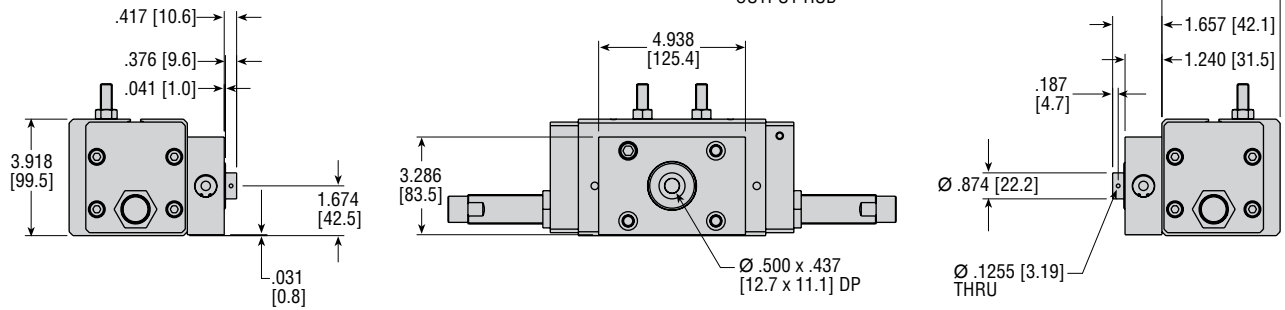
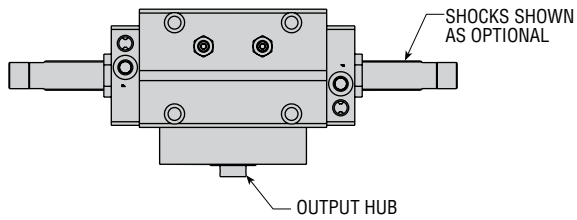
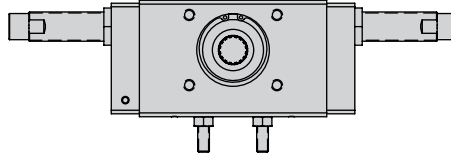
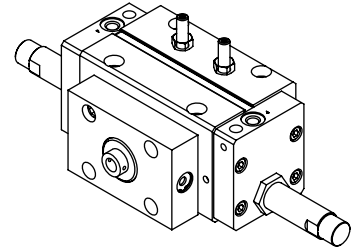
- Rotary with unidirectional clutch
- Modified to accept clutch
- Adjustable rotation

Industry Uses

- Assembly machines



DIMENSIONS: SERIES RAS WITH CLUTCH MODEL# ML302064



NOTE:

- 1) ALL DIMENSIONS ARE FOR REFERENCE ONLY UNLESS SPECIFICALLY TOLERANCED
- 2) DIMENSIONS NOT SHOWN ARE STANDARD PER UNIT DESCRIPTION
- 3) UNIT INCLUDES A LEFT-HAND CLUTCH MECHANISM (OUTPUT HUB WILL ONLY ROTATE COUNTERCLOCKWISE)



phd *Unlimited*[®]

UNIQUE SOLUTIONS

Unique

360° ROTARY WITH GRIPPER

Model# ML307464

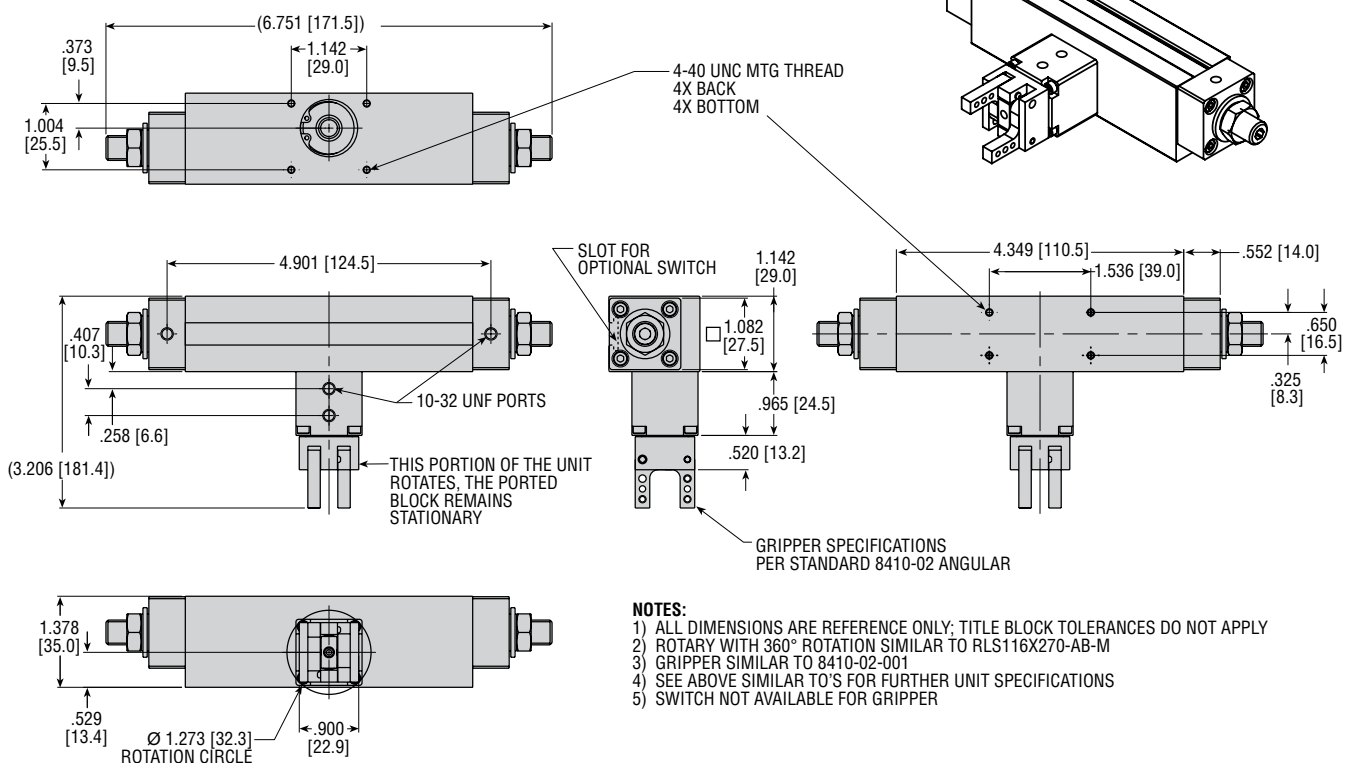


Major Benefits

- 360° Series RLS Rotary with Series 8400 Angular Gripper
- Gripper built into the rotary
- Stationary ports - ports do not rotate

Industry Uses

- Assembly machines



NOTES:

- 1) ALL DIMENSIONS ARE REFERENCE ONLY; TITLE BLOCK TOLERANCES DO NOT APPLY
- 2) ROTARY WITH 360° ROTATION SIMILAR TO RLS116X270-AB-M
- 3) GRIPPER SIMILAR TO 8410-02-001
- 4) SEE ABOVE SIMILAR TO'S FOR FURTHER UNIT SPECIFICATIONS
- 5) SWITCH NOT AVAILABLE FOR GRIPPER