

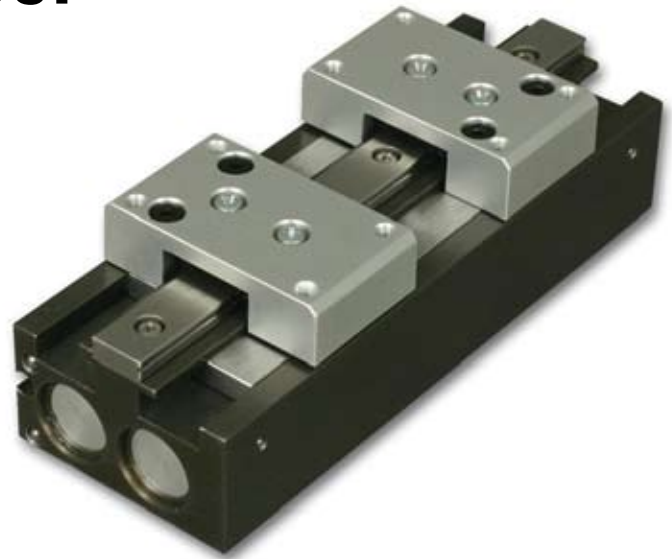


# Three Position Synchronized Rail Gripper

## ML #308248

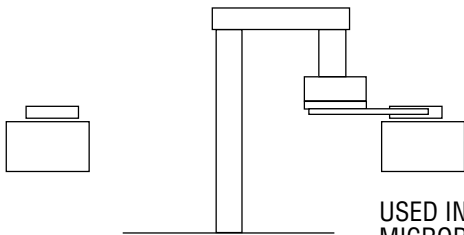
### BENEFITS

- Ground rail delivers high precision with minimal deflection
- 12 mm bore with 1:1 power to jaw force output
- Jaws are synchronized via common pinion
- Jaw positions at closed 0.00", 1.00", and 2.67"
- Intermediate jaw position repeatable to  $\pm .005$ "
- Air centered intermediate position for use with pressure centered valve--requires only two airlines!
- Switch ready for PHD Series 6790 Switches



### SPECIFICATIONS

Unit Weight:	17 oz	[0.48 kg]
Maximum Air Pressure:	150 psi	[10 bar]
Minimum Air Pressure:	20 psi	[1.4 bar]
Total Grip Force at 90 psi:	10.2 lb	[45.4 N]
Bore:	12 mm (2 bores)	
Total Jaw Travel:	2.67 in	[67.8 mm]
Operating Temperature:	20°F to 180°F	[-28.9°C to 82°C]

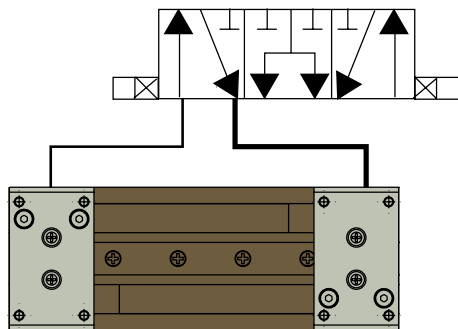


USED IN THE BIOMED INDUSTRY TO TRANSFER MICROPLATES FOR DRUG TESTING.

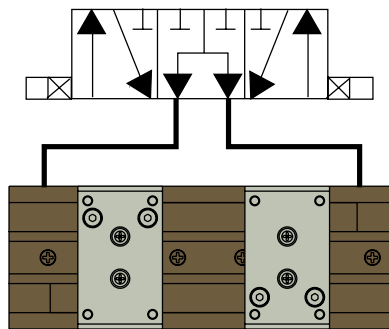
**POSITION 1**

**POSITION 2**

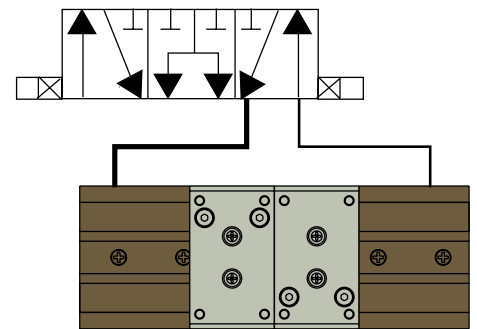
**POSITION 3**



**OPEN**



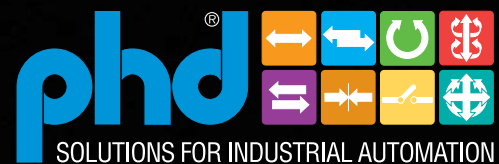
**MID-POSITION**



**CLOSED**

© Copyright 2007, by PHD, Inc. All Rights Reserved. Printed in the U.S.A.

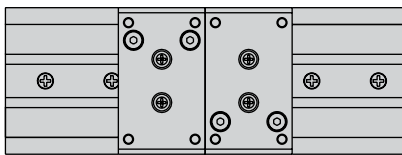
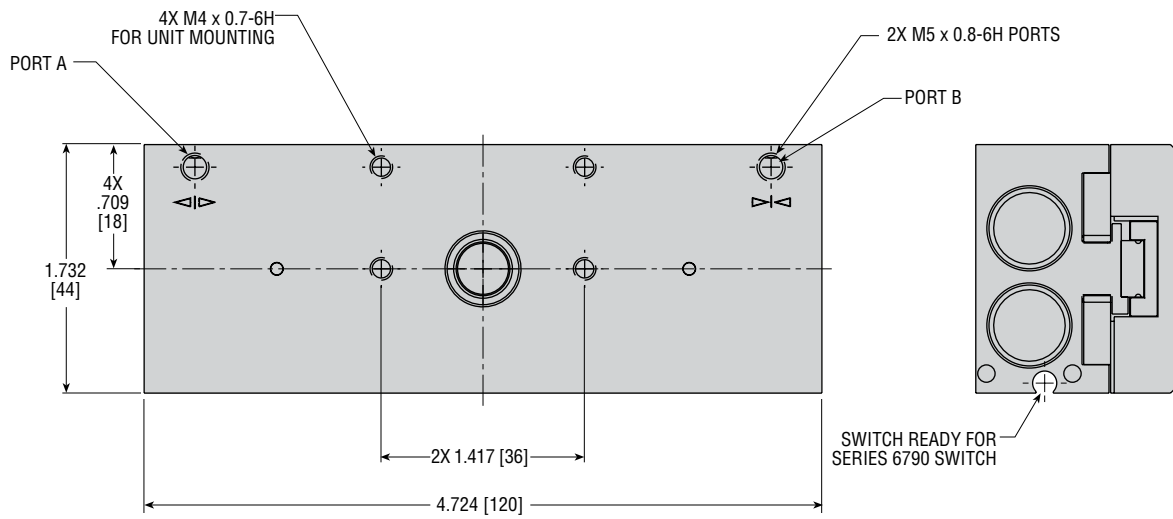
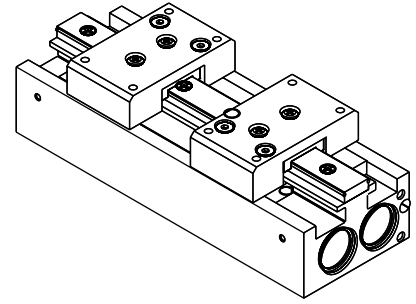
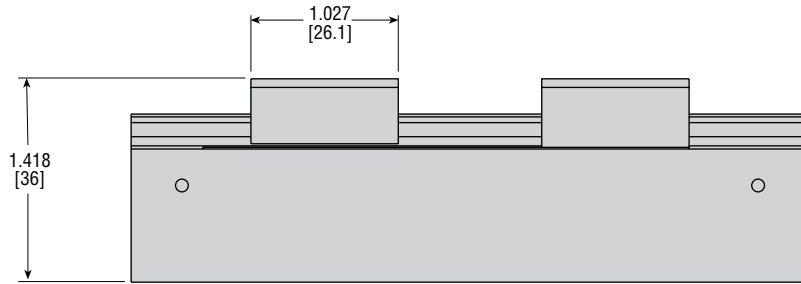
**CP308248**



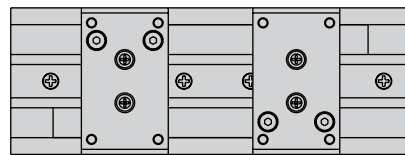
PHD, Inc. • P.O. Box 9070 • Fort Wayne, IN 46899 • (260) 747-6151 • FAX (260) 747-6754  
www.phdinc.com • phdinfo@phdinc.com

# DIMENSIONS: THREE POSITION SYNCHRONIZED RAIL GRIPPER

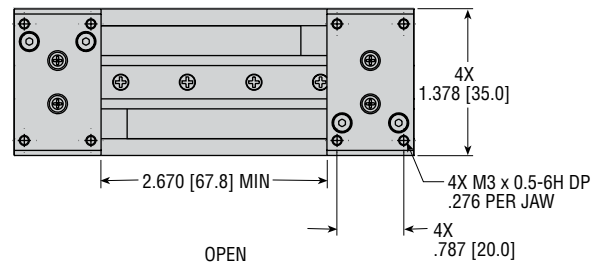
ML#308248



CLOSED



INTERMEDIATE POSITION



OPEN

CP308248

**PHD, Inc.**  
 9009 Clubridge Drive  
 P.O. Box 9070, Fort Wayne, Indiana 46899 U.S.A.  
 Phone (260) 747-6151 • Fax (260) 747-6754  
 www.phdinc.com • phdinfo@phdinc.com

**PHDinEurope GmbH**  
 Arnold-Sommerfeld-Ring 2  
 52499 Baesweiler, Germany  
 Tel. +49 (0)2401 805 230 • Fax +49 (0)2401 805 232  
 www.phdinc.com • info@PHDinEurope.de