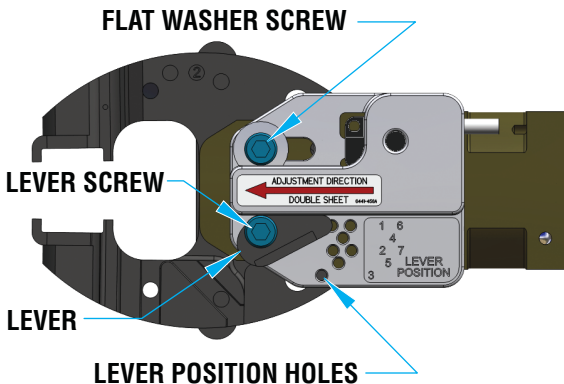


DOUBLE SHEET DETECTION FIELD SET-UP PROCEDURE

7450-3

- 1) Using pressure, close clamp jaws with one panel between tips.
- 2) Loosen both screws and remove lever from locating hole.
- 3) Slide housing in direction of arrow (toward jaws) until switch just turns on.
- 4) Snug flat washer screw. The housing should still slide back and forth.
- 5) Rotate lever into hole that matches present housing location and snug screw.
- 6) Wiggle housing forward and backward. If switch flickers off and on, rotate the lever into the next hole with higher number (i.e., from 2 to 3). Wiggle housing again. Switch should stay on. If not, continue to higher numbered hole until switch does not flicker.
- 7) Tighten both screws to 85 lb-in [9.6 Nm]. The switch is now set.



TO TEST SETUP:

- 1) Using pressure, close clamp jaws with one panel between tips. The switch should stay on.
- 2) Close clamp jaws with two panels between tips. The switch should turn off. NOTE: With no panel present, the switch will turn on and remain on as the target passes under the switch.



SOLUTIONS FOR INDUSTRIAL AUTOMATION

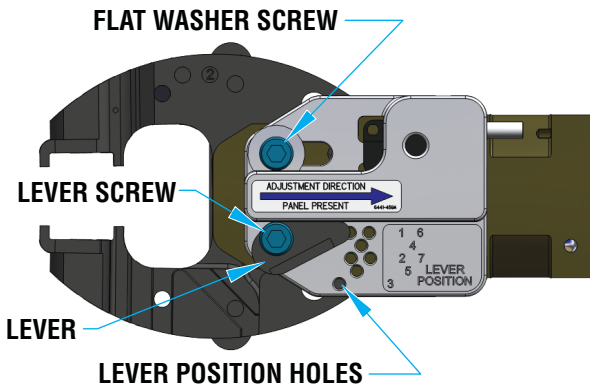
PHD, Inc. • Fort Wayne, IN 46809 • (260) 747-6151 • FAX (260) 747-6754

www.phdinc.com • phdinfo@phdinc.com

PANEL PRESENT FIELD SET-UP PROCEDURE

7450-3

- 1) Using pressure, close clamp jaws with panel between tips.
- 2) Loosen both screws and remove lever from locating hole.
- 3) Slide housing in direction of arrow (toward cylinder) until switch just turns on.
- 4) Snug flat washer screw. The housing should still slide back and forth.
- 5) Rotate lever into hole that matches present housing location and snug screw.
- 6) Wiggle housing forward and backward. If switch flickers off and on, rotate the lever into the next hole with lower number (i.e., from 5 to 4). Wiggle housing again. Switch should stay on. If not, continue to lower numbered hole until switch does not flicker.
- 7) Tighten both screws to 85 lb-in [9.6 Nm]. The switch is now set.



TO TEST SETUP:

- 1) Using pressure, close clamp jaws with one panel between tips. The switch should stay on.
- 2) Close clamp jaws with no panel between tips. The switch should turn off. **NOTE:** With no panel present, the switch will turn on as the target passes under the switch and turn off as the jaws reach full closed.

