



Tire Curing Solution

SAH150x1-AE Tire Stop

BENEFITS

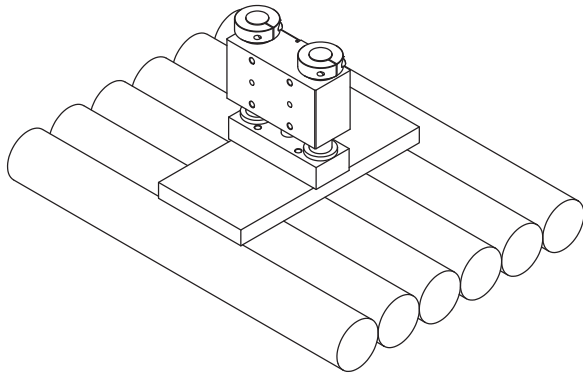
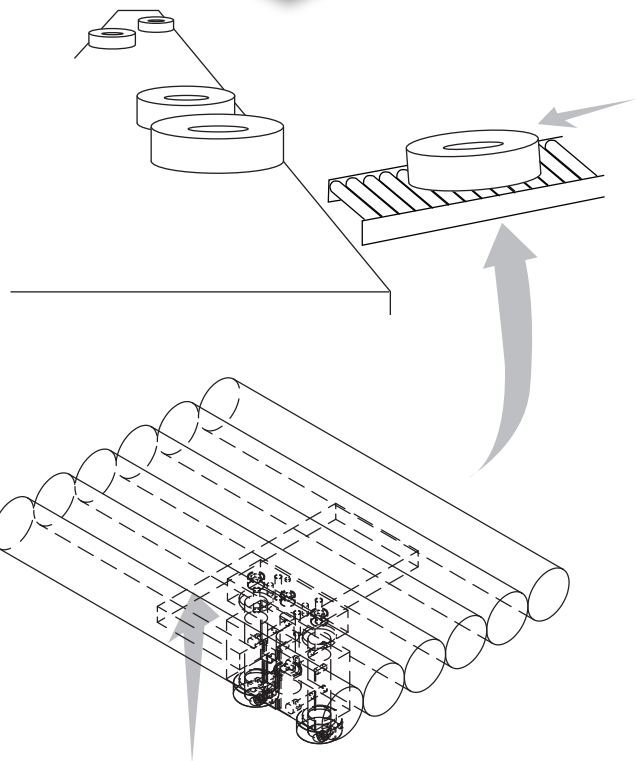
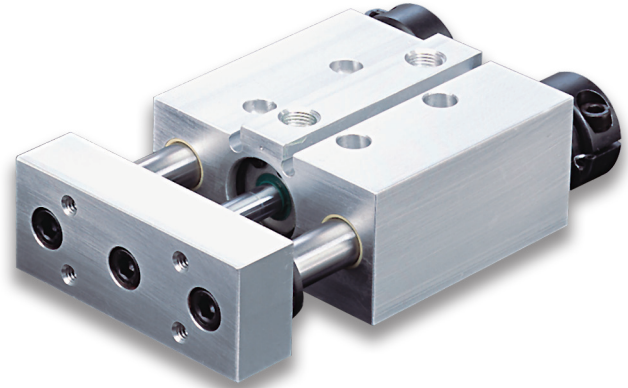
- Non-contact roller conveyor stop eliminates marking on the tire
- Superior delivery
- Field repairable

PROBLEM

A tire fresh from the press is subject to deformation due to mechanical hard stops such as cylinder rods and staging stops.

SOLUTION

Where roller conveyors are used, adding a friction plate to the PHD SAH150x1-AE successfully stops rollers thus stopping the tire without marring it.



Assembly flipped over to see brake assembly

Tire is on top of conveyor. Slide brake below pushes friction pad against rollers thus stopping rollers and tire without marking tire.

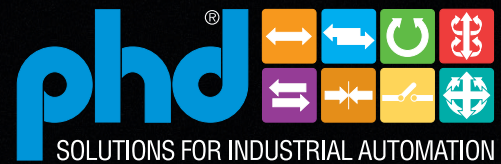
1/15 9645

© Copyright 2015, by PHD, Inc. All Rights Reserved. Printed in the U.S.A.

CPTIRESTOP



PHD is a member of the
MAC Distributor Network



PHD, Inc. • P.O. Box 9070 • Fort Wayne, IN 46899 • (260) 747-6151 • FAX (260) 747-6754
www.phdinc.com • phdinfo@phdinc.com