



# 3 Jaw Parallel Grippers

ML#305843

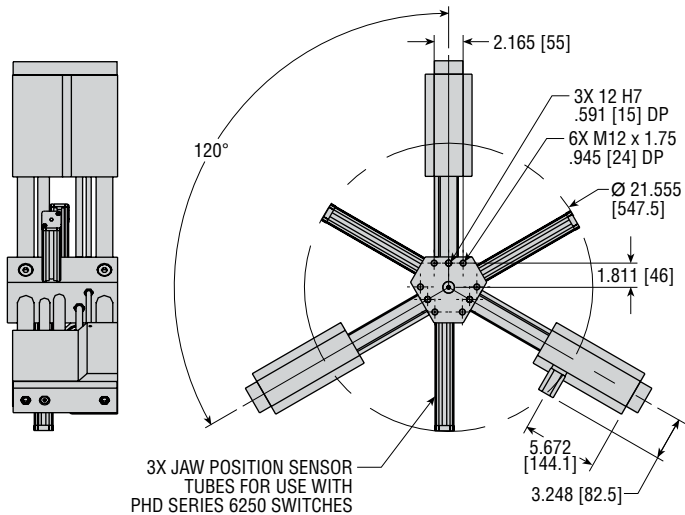
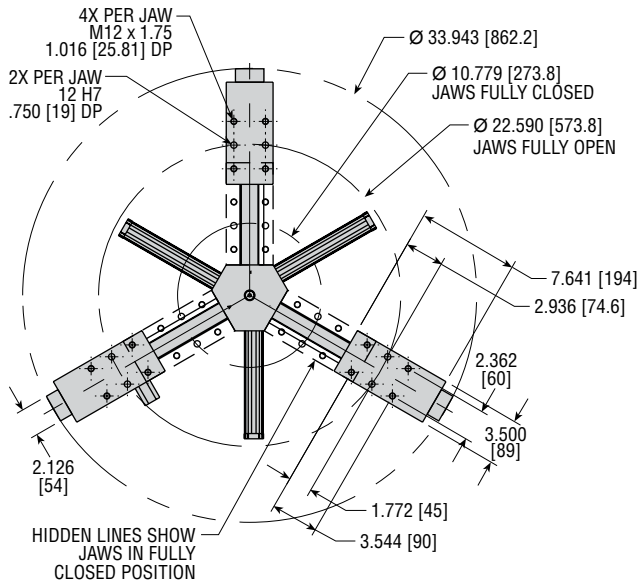
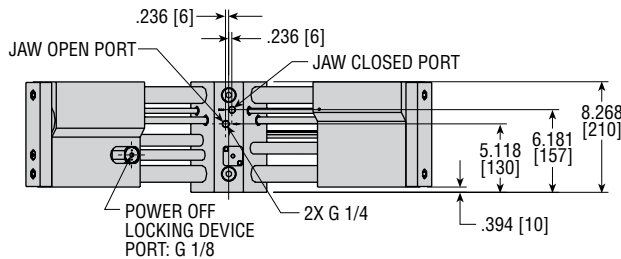


## BENEFITS

- Handles 14" to 24" rims
- Rack and pinion synchronizer minimizes backlash
- Based on proven GRR technology
- Very robust design
- Used in machining and testing application where it is not possible to grip inside hub or inside rim well
- Flat design allows easier handling inside machine
- Multiple jaw-position sensing possible
- Optional Rodlok® locks the jaws mechanically in a stationary position in the event air pressure is lost

## SPECIFICATIONS

Stroke per Jaw: 5.905 in [150 mm]  
 Total Diametral Change: 11.86 in [300 mm]  
 Approx. Total Grip Force: 675 lb @ 87 psi [3000 N @ 6 bar]  
 (Calculated @ jaw mtg surface)  
 Power Off Locking Force: 337 lb [1500 N]  
 Gripper Weight: 90.4 lb [41 Kg]  
 Max. Operating Pressure: 101 psi [7 bar]



CP305843

50-1 1/07 7089

© Copyright 2007, by PHD, Inc. All Rights Reserved. Printed in the U.S.A.



PHD, Inc. • P.O. Box 9070 • Fort Wayne, IN 46899 • (260) 747-6151 • FAX (260) 747-6754  
 www.phdinc.com • phdinfo@phdinc.com