



PET Replacement Gripper

ML# 303025

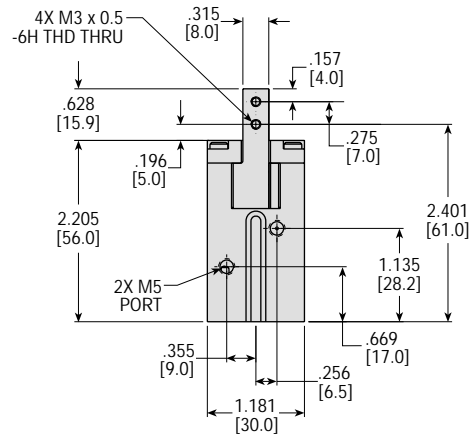
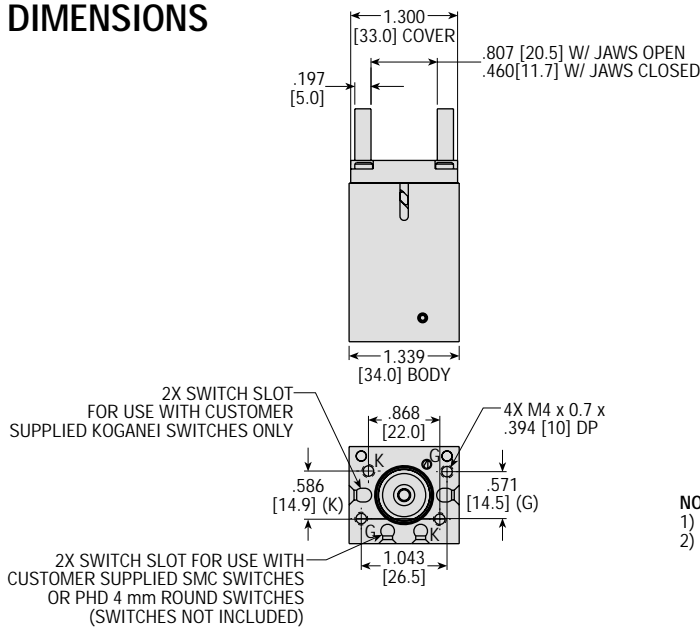


BENEFITS

- Features PET body and cover with stainless steel jaws, jaw driver, and fasteners; providing protection in deionized water applications and eliminates the need for protective jaw boots
- Compact, lightweight design allows for maximum application flexibility
- Double-acting for use in both internal and external gripping applications
- This gripper accepts select competitor switches, saving hours of downtime associated with switch change out. Contact PHD for more information.
- Other configurations are available
- Units are fully field repairable
- Designed and manufactured by PHD, Inc. USA – Over 45 years of automation solutions experience.
- Local/Worldwide Sales, Service, and Support

SPECIFICATIONS	PET Replacement Gripper
TOTAL GRIP FORCE @ 60 psi [4.1] bar	15 lb [67 N]
UNIT WEIGHT	5 oz [142 grams]
MINIMUM AIR PRESSURE	20 psi [1.4 bar]
MAXIMUM AIR PRESSURE	80 psi [5.5 bar]
TOTAL JAW TRAVEL	8.5 mm
BODY MATERIAL	PET
JAW MATERIAL	17-4 PH Stainless Steel

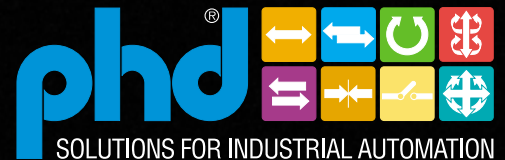
DIMENSIONS



NOTES:
 1) DIMENSIONS ARE FOR REFERENCE ONLY
 2) ALL METRIC DIMENSIONS ARE GIVEN IN MILLIMETERS 1 mm = .03937 in

© Copyright 2005, by PHD, Inc.

CP303025



PHD, Inc. • P.O. Box 9070 • Fort Wayne, IN 46899 • (260) 747-6151 • FAX (260) 747-6754
 www.phdinc.com • phdinfo@phdinc.com