

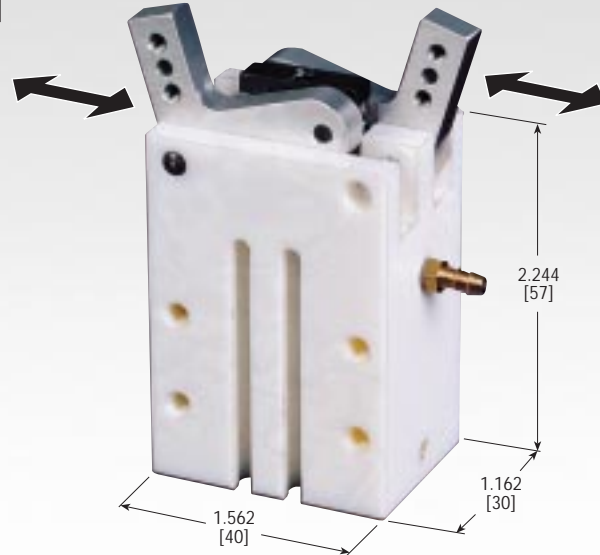


Gripper: Single Acting Polymer (PET) Gripper with Spring Assist Open

ML# 301141

BENEFITS

- Lightweight/high grip force construction
- T6 aluminum jaws
- Side ported
- Designed for part production in a water and/or high moisture environment
- Single acting
- Hall Effect magnet installed for PHD 4 mm Series Hall effect switch
- White PET for ease of identifying contaminants
- Designed for light duty applications



INDUSTRY FOCUS

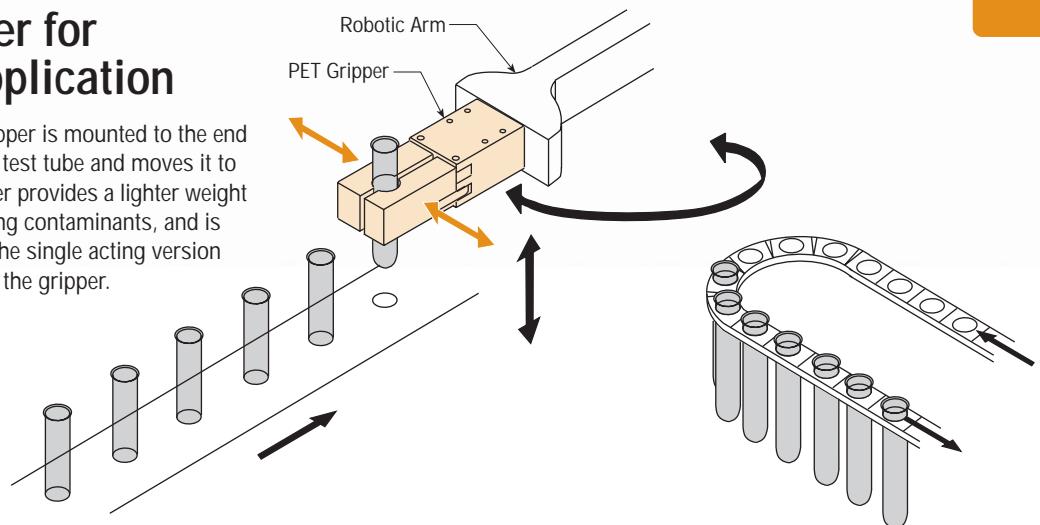
INDUSTRY	SIC
Pharmaceutical	3841
Electronics	367
Semi-conductor	3674

SPECIFICATIONS

Unit Weight	.26 lb [118 g]
Maximum Air Pressure:	100 psi [7 bar]
Minimum Air Pressure:	30 psi [2 bar]
Total Grip Force @ 87 psi/1" tooling:	17 lbs [75 N]
Total Jaw Travel (measured from jaws parallel)	4° inward/13° outward

Angular PET Gripper for Pharmaceutical Application

In this application, the PET angular gripper is mounted to the end of a robotic arm. The gripper grips the test tube and moves it to the test station. The PET angular gripper provides a lighter weight gripper, white PET for ease of identifying contaminants, and is corrosion resistance for wash down. The single acting version allows the use of one airline to actuate the gripper.



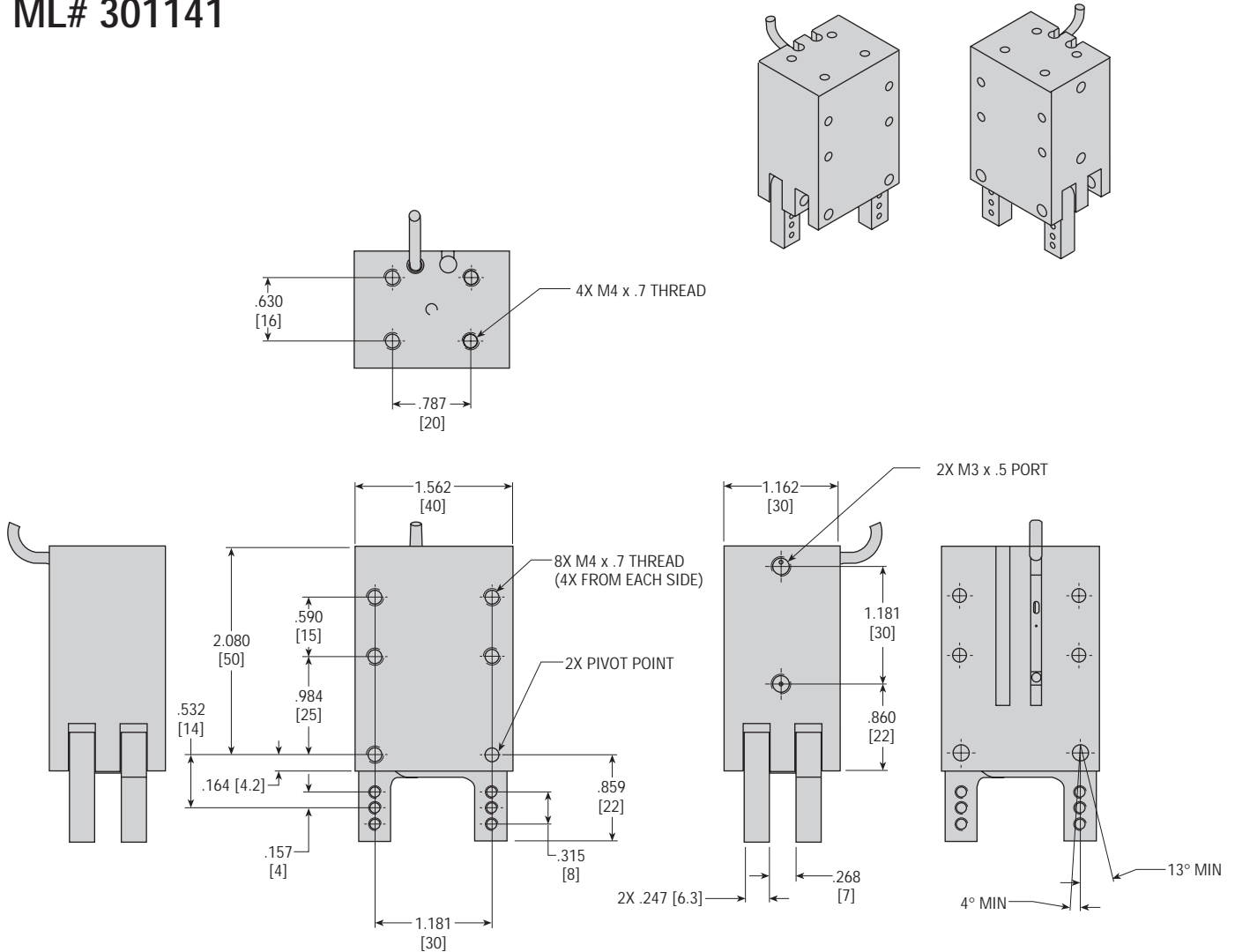
© Copyright 2001, by PHD, Inc.

CP027



DIMENSIONS: POLYMER GRIPPER WITH STAINLESS JAWS

ML# 301141



NOTES:

- 1) ALL DIMENSIONS ARE REFERENCE ONLY UNLESS SPECIFICALLY TOLERANCED
- 2) UNIT SHOWN WITH SWITCH (ORDERED SEPARATELY)
- 3) METRIC INFORMATION SHOWN IN [].
- 4) SIZE AND GRIP FORCE COMPARISON:

	19012	19022	ML 301141
WEIGHT	3.03 oz	7.8 oz	4.4 oz
HEIGHT	1.023	1.496	1.162
WIDTH	1.023	1.496	1.562
LENGTH	1.535	1.89	2.244
ESTIMATED GRIP FORCE (.984 from pivot @87 psi neglecting frictional losses)	4.5 lb	18 lb	15 lb

CP027

PHD, Inc.
9009 Clubridge Drive
P.O. Box 9070, Fort Wayne, Indiana 46899 U.S.A.
Phone (219) 747-6151 • Fax (219) 747-6754

PHD GmbH
Arnold-Sommerfeld-Ring 2
D-52499 Baesweiler GERMANY
Phone 02401-805 230 • Fax 02401-805 232

www.phdinc.com • phdinfo@phdinc.com

3M 6/01 5334